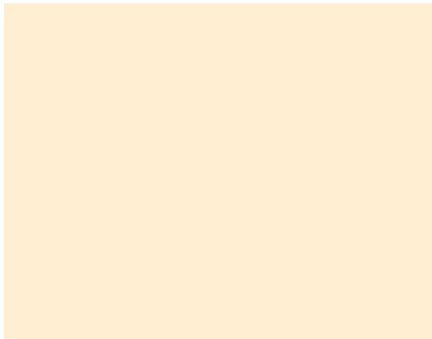


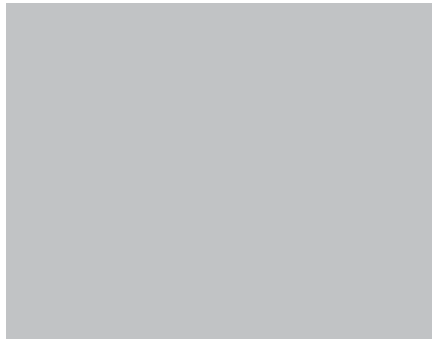
DEX-O-TEX[®]

Standard Color Chart for

Epoxy • Urethane • Polyaspartic • ColorPax E • U • W



303 IVORY CREAM



413 SPEEDWAY GRAY



211 GREEN



304 SANDPIPER BEIGE



431 BRIGHT GRAY



720 MEDIUM BLUE



503 ADOBE



402 DARK GRAY



607 BRICK RED

ALSO AVAILABLE IN BLACK, WHITE, SAFETY RED AND SAFETY YELLOW. Consult your Dex-O-Tex Representative for other colors and combinations.

Printed color charts approximate actual color. Final color approval should be made from physical sample. Final color appearance is affected by lighting, surface texture and method of application.

Individual products may not be available in both gloss and matte finishes. Depending on product selection, a Clear Gloss or Clear Matte top coat may be required to achieve the desired look.

Contact us today for more information!

www.dexotex.com

West Coast • Rancho Dominguez, CA
(310) 886-9100 • (310) 886-9119 fax

East Coast • Roselle Park, NJ
(908) 245-2800 • (908) 245-0659 fax

DEX-O-TEX[®]

Colorflake

Decorative Epoxy Flooring System

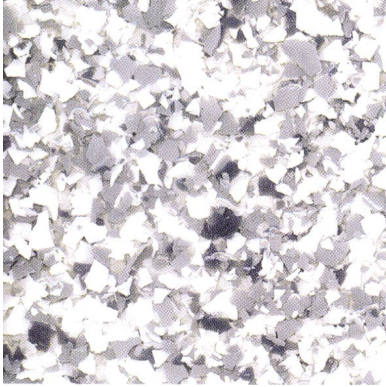
With 1/4" Vinyl Chips (100% Coverage)

**Dex-O-Tex Product Line
Crossfield Products Corp.**

3000 E. Harcourt Street
Rancho Dominguez, CA 90221
Tel. (310) 886-9100
Fax (310) 886-9119

www.dexotex.com

140 Valley Road
Roselle Park, NJ 07204
Tel. (908) 245-2800
Fax (908) 245-0659



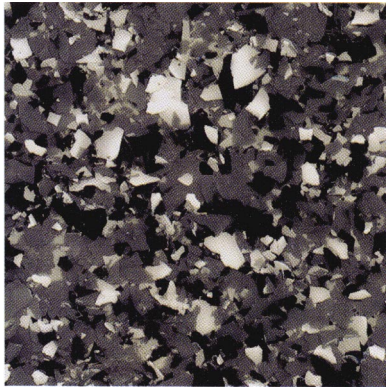
CF 01 GRAY, WHITE



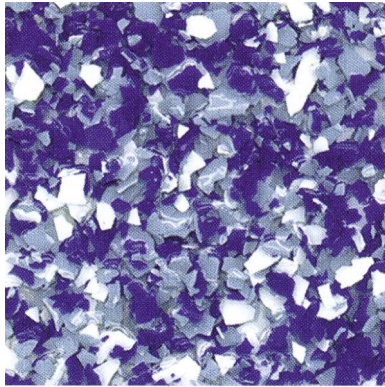
CF 02 LIGHT BLUE, GRAY, WHITE



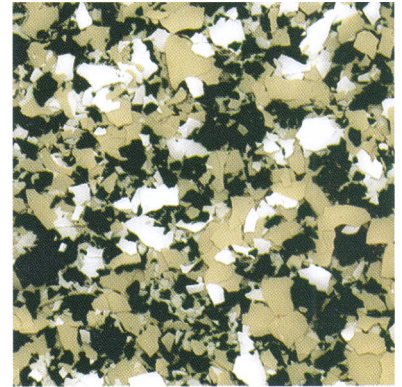
CF 03 TAN, LIGHT GREEN, WHITE



CF 04 GRAY, BLACK, WHITE



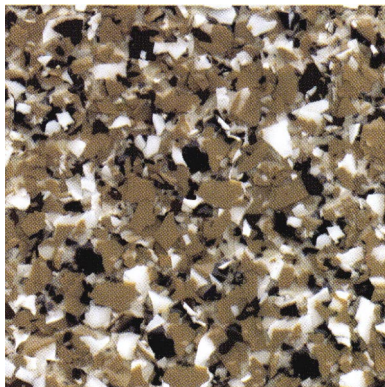
CF 05 DARK BLUE, LIGHT BLUE, WHITE



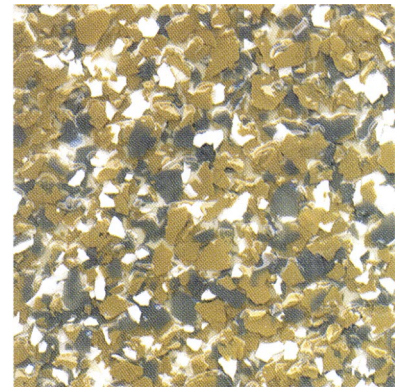
CF 06 DARK GREEN, BEIGE, WHITE



CF 07 RED, WHITE



CF 08 BROWN, LIGHT BROWN, WHITE



CF 09 CAMEL TAN, GRAY WHITE

ALSO AVAILABLE IN BLACK, WHITE, SAFETY RED AND SAFETY YELLOW. Consult your Dex-O-Tex Representative for other colors and combinations.

Printed color charts approximate actual color. Final color approval should be made from physical sample.
Final color appearance is affected by lighting, surface texture and method of application.

Individual products may not be available in both gloss and matte finishes.

Depending on product selection, a Clear Gloss or Clear Matte top coat may be required to achieve the desired look.

Decor-Flor

*Decor-Flor and Cheminert
CFS Flooring Using
Quartz Aggregate*

DEX-O-TEX®

Dex-O-Tex Product Line
Crossfield Products Corp.

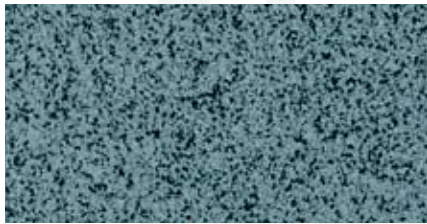
300 E. Harcourt Street
Rancho Dominguez, CA 90221
Tel. (310) 886-9100
Fax (310) 886-9119

www.dexotex.com

140 Valley Road
Roselle Park, NJ 07204
Tel. (908) 245-2800
Fax (908) 245-0659

DISCONTINUED
DISCONTINUED
DISCONTINUED
DISCONTINUED

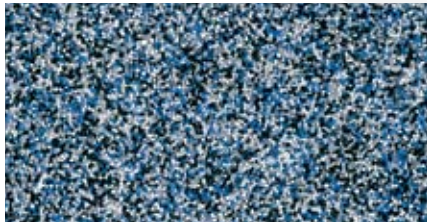
DFS 01



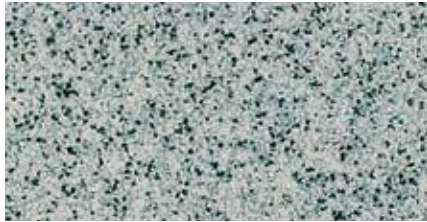
DFS 02



DFS 03



DFS 04



DFS 05



DFS 06



DFS 07



DFS 08



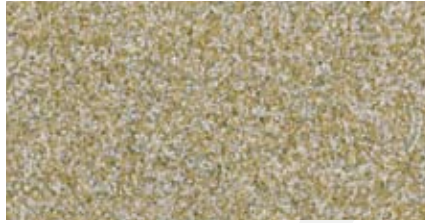
DFS 09



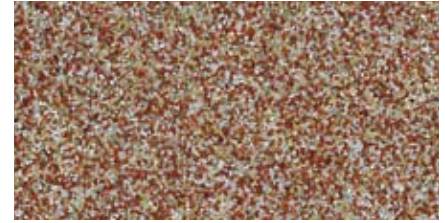
DFS 10



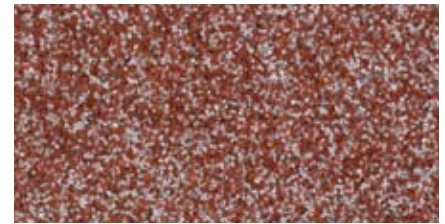
DFS 11



DFS 12



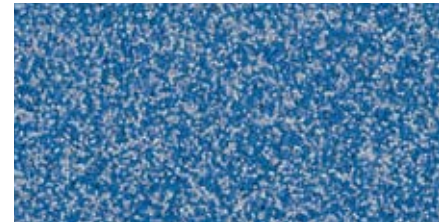
DFS 13



DFS 14



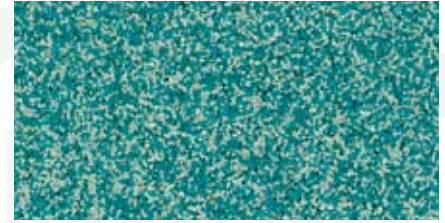
DFS 17



DFS 89



DFS 142



DFS 143

Printed color charts approximate actual color. Final color approval should be made from a physical sample. Final color appearance is affected by specific overlayment, surface texture, methods of application, type of sealer, lighting and contractor placement technique.

Available in gloss or satin finish.